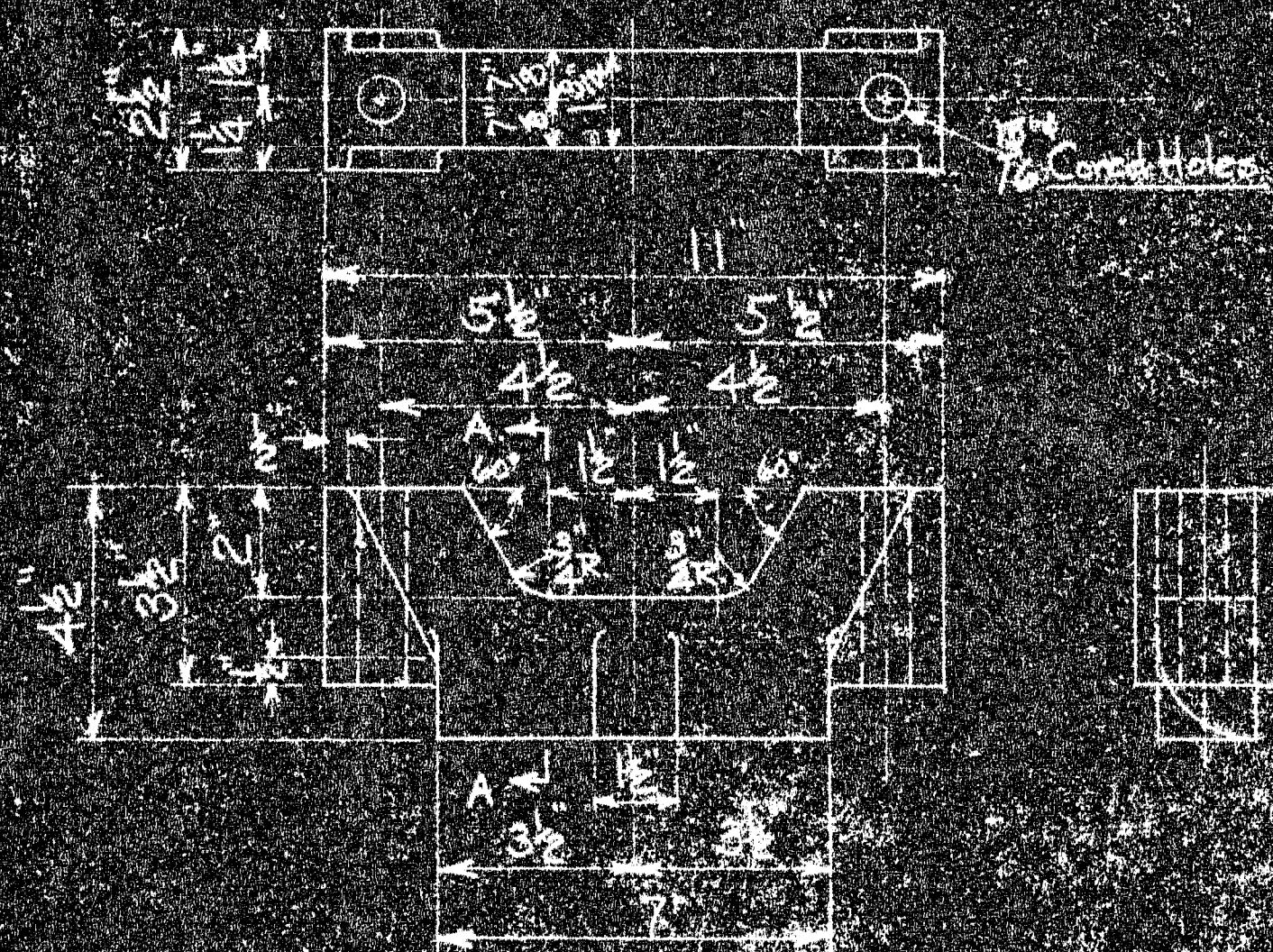
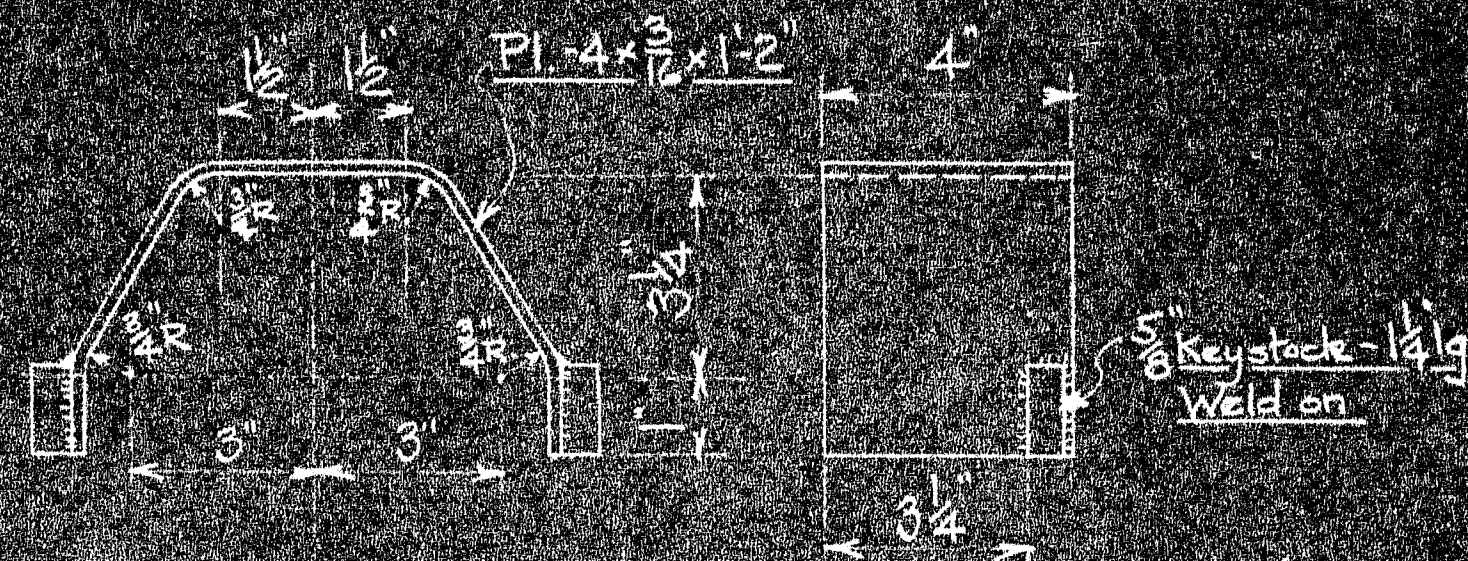


M32-16A - CLAMP HALF

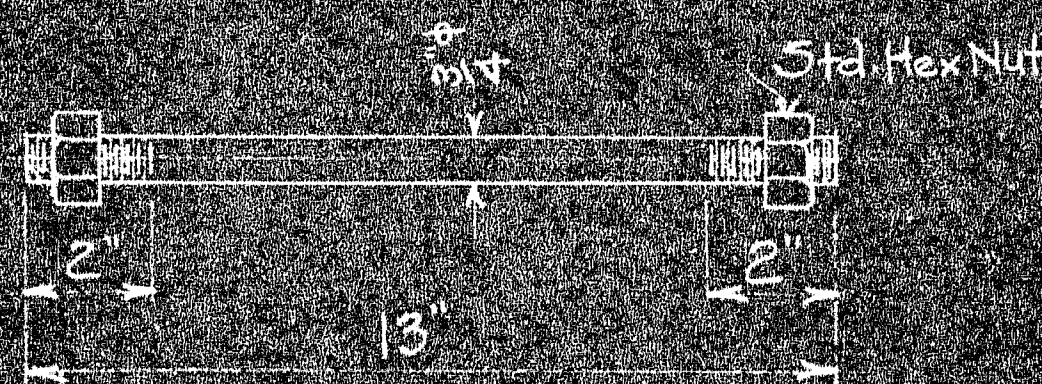
Make from Maple Block 1 1/2 x 5 1/2 x 11 1/2



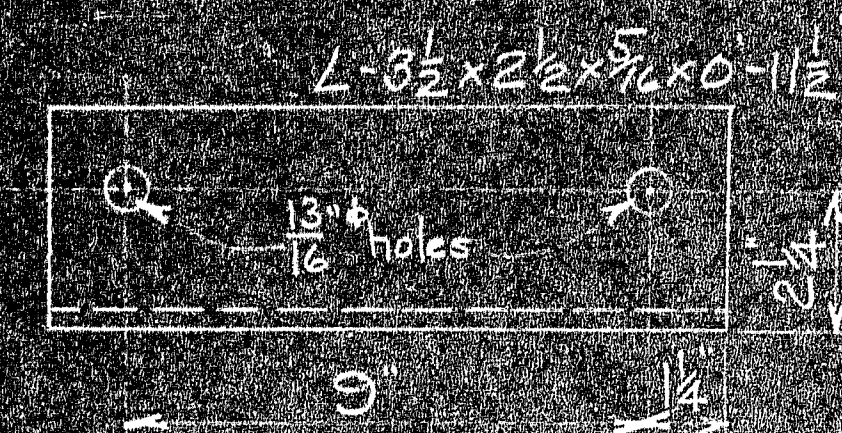
M32-16B - CLAMP HALF



M32-16C - BENT PLATE



M32-16E - BAR BOLT



M32-16D - ANGLE

M32-16E	144	Steel	5810-13	Bar Bolt	
M32-16D	72	Steel	5810-13	Angle	
M32-16C	72	Steel	5810-13	Bent Plate	
M32-16B	72	C.I.	5814-13	Clamp Half	
M32-16A	72	Maple	5812-13-14	Clamp Half	

MARK	REQ'D	MAT'L	REQ. NO.	NAME	REMARKS
------	-------	-------	----------	------	---------

BILL OF MATERIAL

JOHN A. ROEBLING'S SONS CO., TRENTON, N. J.

DEER ISLE BRIDGE

TEMPORARY STAYS

CABLE BAND CONNECTION DETAILS

BY	REVISIONS	DATE	SCALE 3"=1'-0"	SERIAL	SHEET
----	-----------	------	----------------	--------	-------

DES. DR. CH. 112-5

TR. CH. 112-5

CH. DR. 112-5

CH. 112-5

